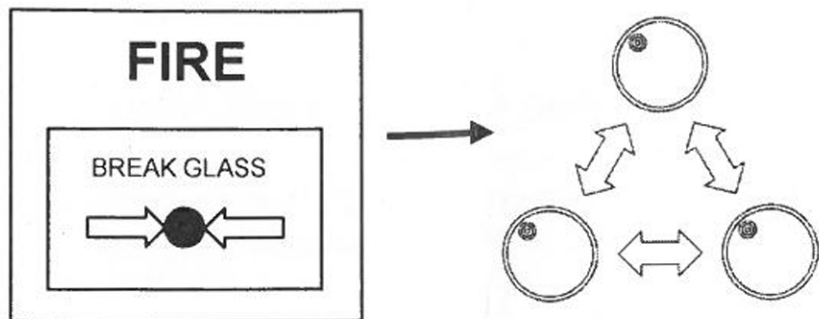


OWNERS MANUAL FOR WIRELESS CALL POINT

Wireless Manual Call Point

Wireless Smoke
&/or Heat Alarm



The wireless call point almost covers all kind of existing control panel and similar application such as emergency dialer, sirens, emergency lighting, call points, fire and/or police station, air exhausting system, emergency door locker released system etc. It can put together as attachment or install just next to the panel with wiring. When the call point is triggered by breaking the glass, it can send signal to other alarms and/or application.

Frequency Range: 434.33 MHz

This call point can provide signal to link with common residential or industrial fire alarm control panel. It can easily communicate with wireless photo smoke alarm (PR1211), wireless combination photo smoke & heat alarm (PHR1211) & wireless heat alarm (HR1211), wireless gas alarm (GR1211) and wireless CO alarm (CR1211).



These wireless call point is equipped with a very sophisticated, and reliable radio system. Due to the use of modern and advanced components, the range and penetration is high, while the current consumption is extremely low, giving a long battery life. To enable radio transmission of alarms, including during severe radio conditions such as radio interference etc., each wireless call point has a code switch to reduce the risk of interference of (or to) similar systems in the neighbourhood.

Regular check the range and function, please note that the radio condition and interference can change over time, no guarantee given to a specific transmission range.

INSTALLATION – please refer to the separate manual for Manual Call Point Installation

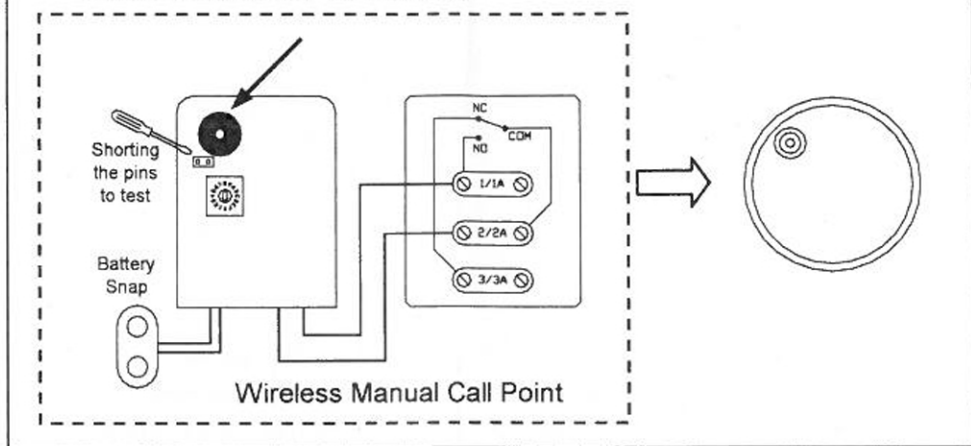


Test after installation by authorized and qualified technical personnel to ensure proper installation and set up.

CONNECTION & TEST

BUZZER:

- Beeps when receiving wireless signals
- Beeps when low battery
- Continuously sounds when testing



Monthly test is required and recommended. Short the 'Pins' with screw driver, the wireless signal will continue to transmit for about one minute. Alternatively, test using the key provided by the call point.

 **DO NOT PAINT**

BATTERY INSTALLATION.

The power supply should be a good quality 9-volt battery (PP3) of alkaline or lithium type, for example Duracell MN1604. Battery life is normally in excess of one year.

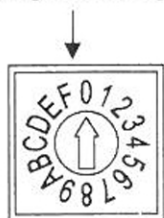
LOW BATTERY WARNINGS

If power supply drop below 7.0V it will start beeping once per every 8 seconds. It is time to replace the battery, the wireless call point will give a low battery warning “beep” for up to 30 days (the alarm is fully operational during this period).

CODING

In an alarm system, all units must be set to the same code. The factory pre-set at the same radio code to prevent interference from other systems, we recommend that you change the code on all units on installation. The same is recommended if you – for any reason incur problems suspected to be nuisance alarms. When new codes are set, each unit and the whole system should be tested again (Please refer to the “TEST” section.) After changing the code, it requires to wait 10 seconds for new coding to be effective.

simple coding



SPECIAL ALARM AND CODE FUNCTIONS

Normally case all units must have identical codes to enable alarms to transmit wirelessly. This is however not applicable to code “0” which has special “priority” functions. If the alarm has code “0” this unit will receive an alarm from units with all other codes after a 3-minute delay. This feature could be used in several applications, for example it could be given to an alarm in a staircase of a HMO building, then if the alarm in an empty apartment sounds an alarm for more than 3 minutes this will be transmitted to the staircase unit.

In the stairway, code “0” could be used for escape purposes. If for example the wireless call points in the staircases (or basement/attics) have code “0”, and one of these sounds an alarm, then all other units regardless of codes will sound an alarm.



CAUTION: The wireless call point does not prevent fire. It is an early warning device. No more, No less.

IMPORTANT INFORMATION ABOUT RADIO TRANSMISSION OF ALARMS

Regularly check the range and function before and after installation. Please note that radio conditions and interference etc. can change over time, therefore no guarantee can be given about a specific transmission range etc. Each time, place and building are unique from a radio transmission point of view.

⚠WARNING! The call point is designed to provide reasonable protection against harmful interference in a residential installation. This call point generates, uses and can radiate radio frequency energy and, if not installed and used in accordance with the instructions, may cause harmful interference to radio communications. However, there is no guarantee that interference will not occur in a particular installation. If the call point does cause harmful interference to radio or television reception & etc, which can be determined by turning it off and on (Remove battery & reinstalled again), the user is encouraged to try to correct the interference by one or more of the following measures:

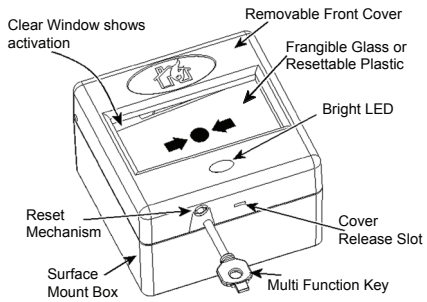
- Change code and try again
- Particular environment – reallocated the call point installation position
- Shorter distance in between the call point

⚠The manufacturer will not guarantee on performance of the call point for the following circumstances:

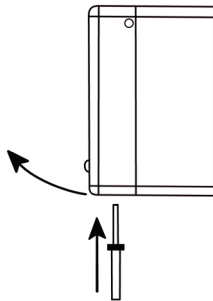
- Installed network beyond specified receiving range.
- Improper installation and set up.
- Unexpected interference from other radio transmitting devices in the area.
- Installed by unqualified personnel.

Warranty

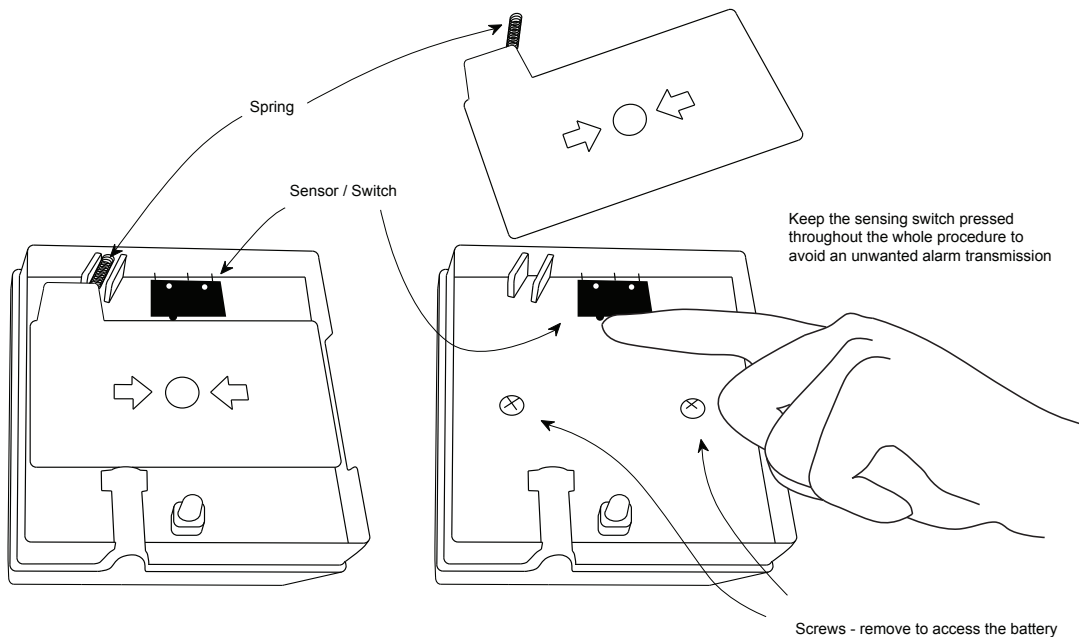
The manufacturer warrants this product (excluding battery) to be free from defects in materials and workmanship for one year from the date of purchase. This only applies if the call point is used in the normal way and maintenance carried out regularly. The warranty is also conditional on the call point not having been modified or subject to attempted repairs. The warranty excludes incidental and consequential damages. Your statutory rights as a customer are in no way compromised by this warranty. If you think your call point is faulty, do not attempt to repair it, as this will invalidate the warranty.

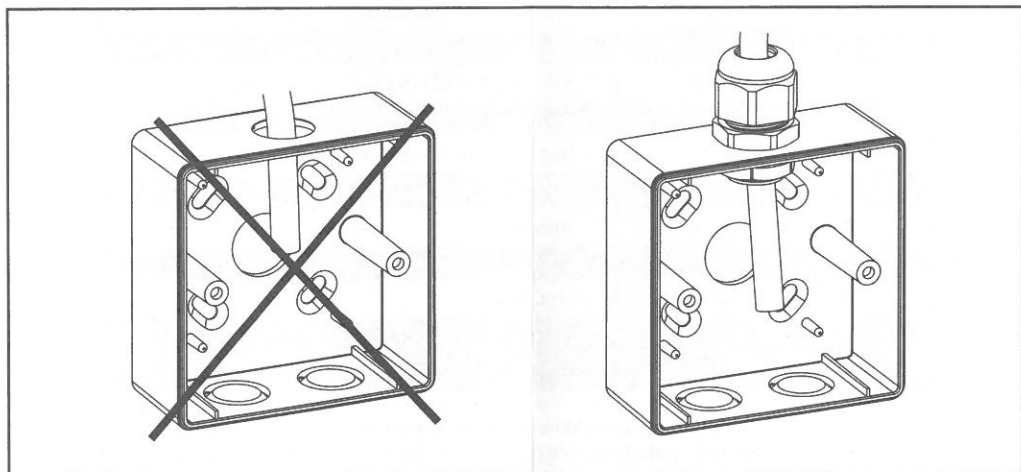
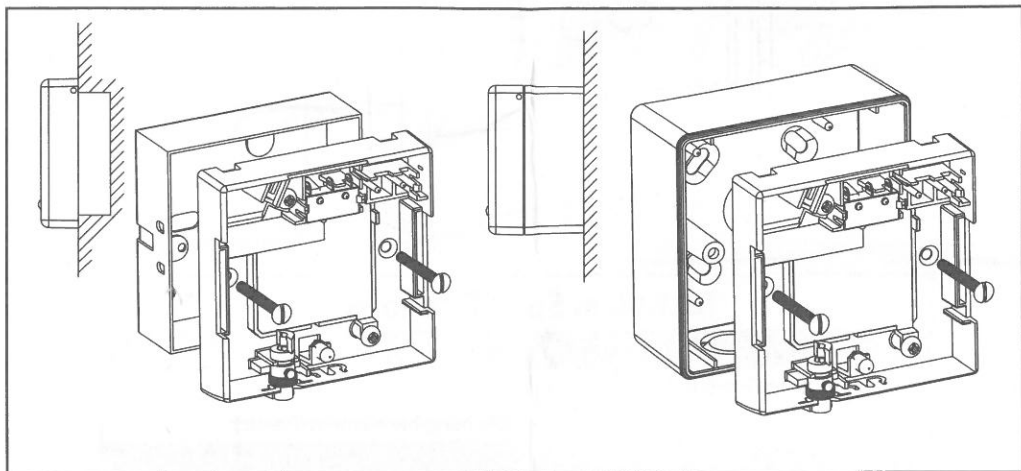
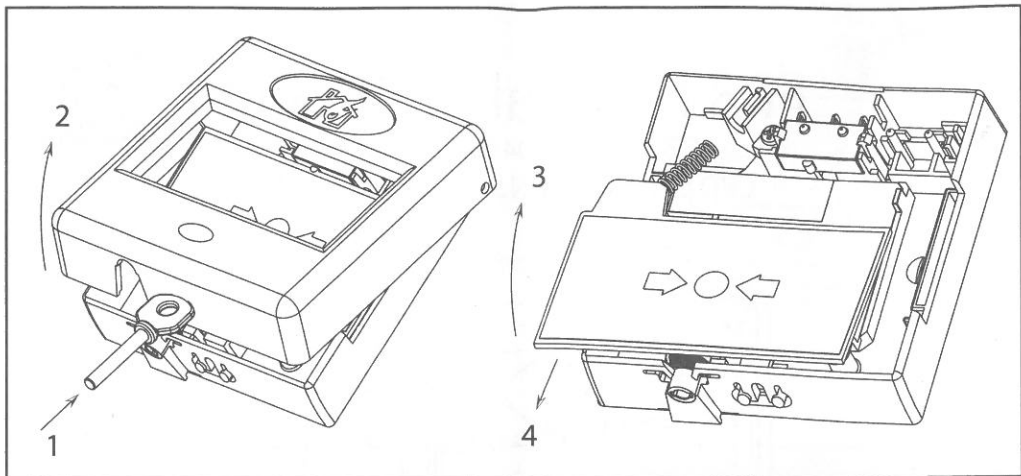


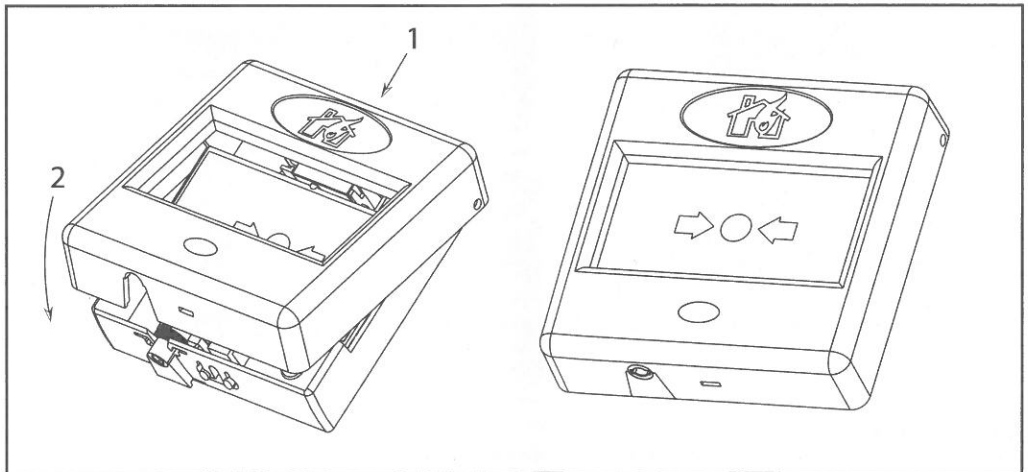
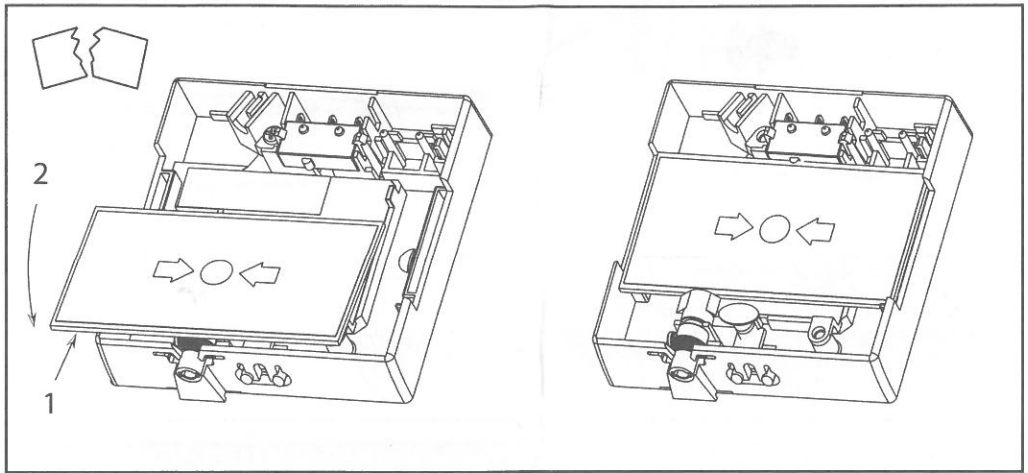
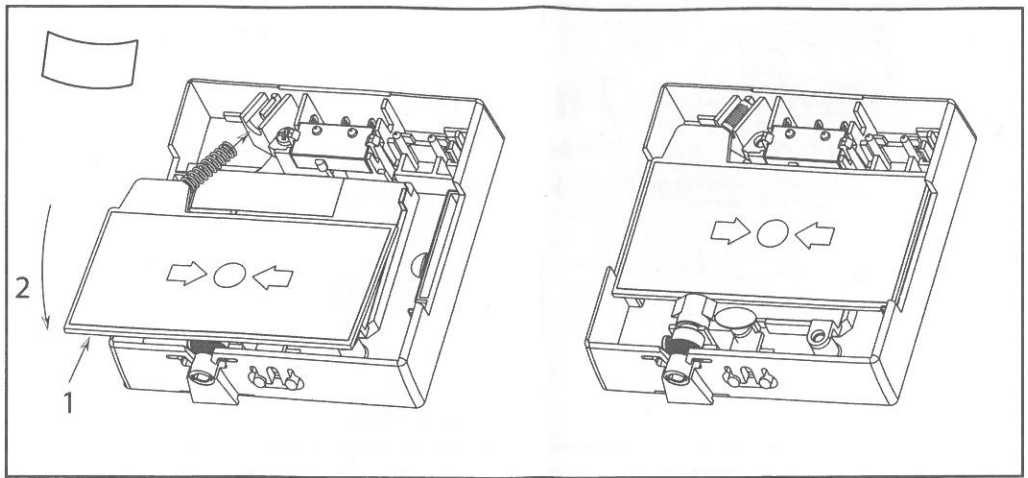
Front Cover Removal

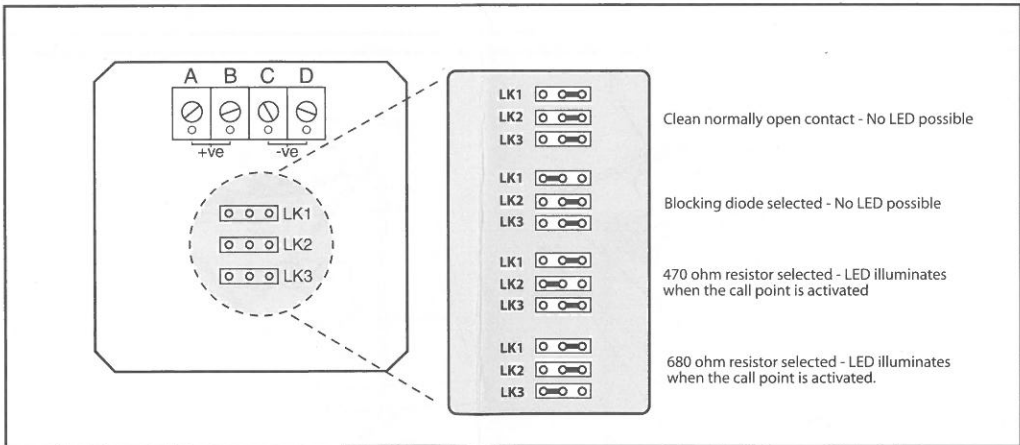
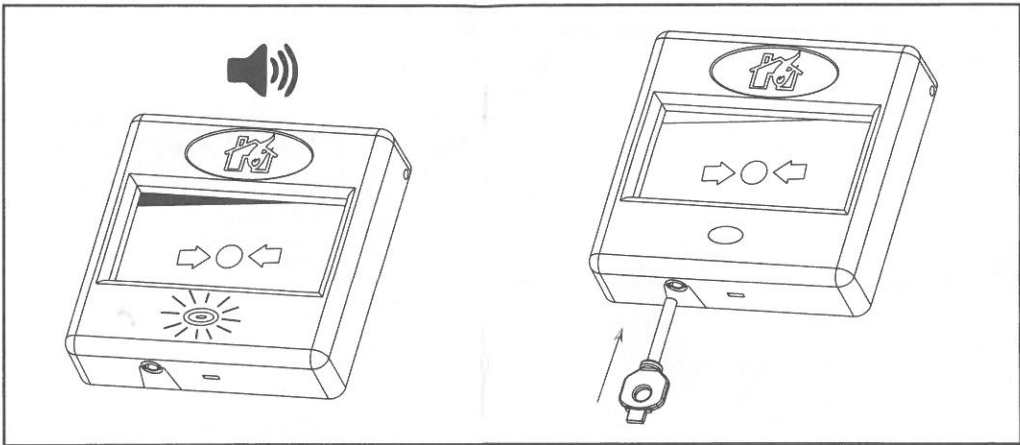
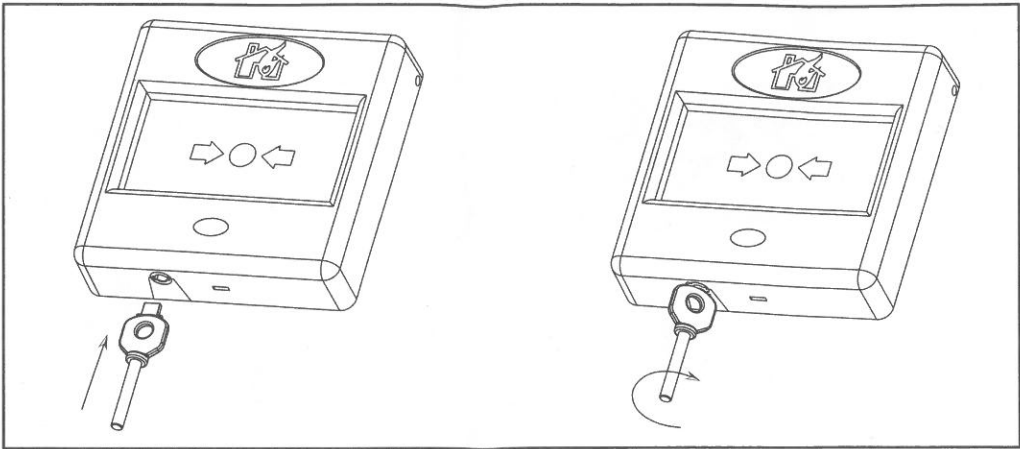


Push the square end of the key into the cover release slot, at the same time tilt the front cover up as indicated.









Environmental Advice.

This product is covered by current WEEE regulations. Please consider the effect on the environment when disposing of it. Do not put in a domestic waste bin. Only dispose of at an appointed recycling centre.

RoHS compliant.

CE0560