

LP GAS ALARM (Propane) OWNER'S MANUAL



WARM UP TIME

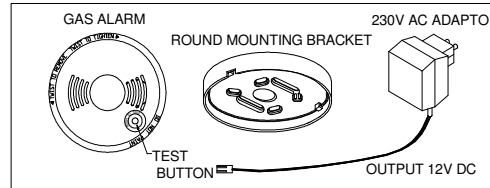
The gas alarm requires 2-3 minutes warm up of initiation period whenever it is powered up. During this period the gas alarm may not response (no alarm) to the push button test.

CAUTION : READ THESE INSTRUCTIONS CAREFULLY BEFORE OPERATING OR SERVICING.

© Copyright
Homewatch



It is recommended to install gas alarm in the place where the gas is likely to occur such as kitchen, basement, garage etc. Ideally, for maximum protection a detector should be fitted in the service connection rooms, stove rooms, kitchen and near gas ovens.

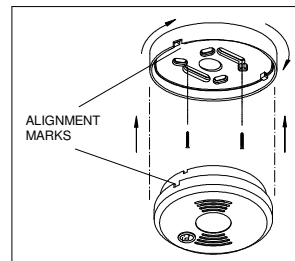


Installation

CAUTION: DO NOT INSTALL THE ALARM IN NEW OR RENOVATED BUILDINGS UNTIL ALL WORK IS COMPLETED, INCLUDING PAINTING AND FINAL CLEANING (EXCESSIVE FUMES FROM PAINTS; SOLVENTS, MAY CAUSE DAMAGE AND DIRT OR DEBRIS MAY BLOCK THE GAS ENTRY).

The Gas Alarm is designed for easy installation. It comes completely with mounting kit. All you have to do is attach the mounting bracket to the wall with the fixing screws provided. Then twist and lock the Gas Alarm into place.

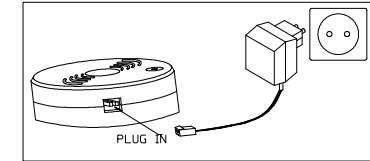
(I)



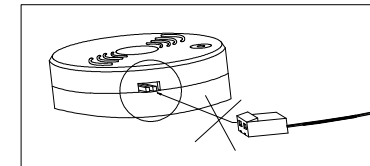
Install the mounting bracket on the wall. Alignment marks of the mounting bracket and the gas alarm should be lined up for power connector plug in. Twist the alarm clockwise until it locks in place.

2

(II)

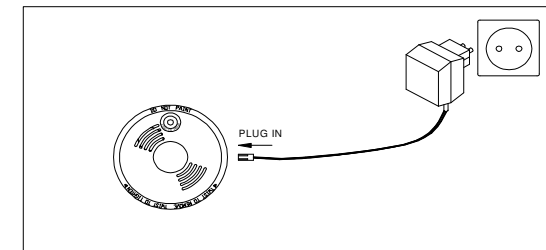


When the cover and mounting bracket opening alignment does not match, the plug could not insert. Rotate only the bracket 180° to match opening alignment.



There is an alignment mark (half opening) on the edge of the mounting plate and the alarm. Alignment marks on the cove and on the mounting bracket should be lined up so that the adaptor plug can be plugged in.

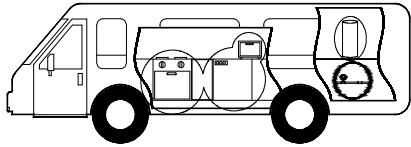
(III)



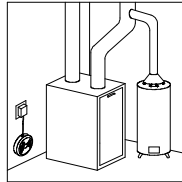
Plug the power connector into the gas alarm, the green LED illuminates to indicate the unit is connecting to power. Depress the test button about 5-10 seconds until the alarm sounds to ensure the alarm is operating mode.

3

Location



Potential Sources of LP Gas Leaks:
Water Heater, Defective Regulator, Defective LP Gas Connection, Stove Top Burners or Oven.



LP Gas / Propane sink
Install the alarm at low position to detect LP Gas/Propane.

IMPORTANT: Alarm should be placed where you will hear it while sleeping.

Checking and Testing the alarm

Check and test the gas alarm after installation. It should be tested weekly and check after re-occupation following a holiday.

- (i) Check that Green LED indication light is on (it could be seen through the sounder hole) to ensure the main power supply is turn on.
- (ii) Check that Red LED (seen through the test button) flashes every 40-second to ensure the unit is in operating mode.
- (iii) Press and hold the test button for up to 5 ~ 10 seconds, and the alarm should sound and the Red LED will flash rapidly while horn is sounding. The alarm will stop when you release the button. To ensure the gas alarm is working, you should test it weekly.

If the Green mains indicator (seen through the sounder hole) does not light; or the red light not flashing as mentioned; or the unit does not respond to the button:

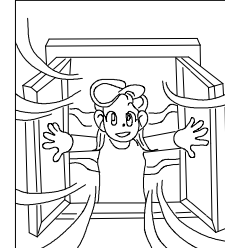
- 1) Make sure the unit is correctly connected with the power connector.
- 2) Make sure the AC adaptor is well plug in with the socket.
- 3) Make sure the socket with AC power supply

If the alarm still fails to work, do not attempt to repair it yourself, it will void your warranty.

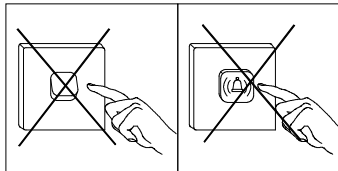
Gas Safety Guide



If you hear the gas alarm sound or suspect that there is a gas leakage.



You should open all windows and doors to allow the gas to disperse.



Don't switch on lighting, press door bell, exhausting fan &/or any kind of electrical appliance to avoid explosion.



Check all the gas appliances. Extinguish any naked flames and turn off the gas control off the gas supply.



Call the Fire department immediately outside your home or premises/ apartment.

Home Safety Guide

- If you are on holiday, turn off appliances switches & the gas control valve.
- Do not place the bed near gas pipes or gas meter.
- Do not change the location of gas pipes by yourself.
- In order to ensure your home safety, please employ registered installers for regular safety inspection of all gas installation & appliances.

ONE YEAR LIMITED WARRANTY

The LP Gas alarm is warranted for one year to be free from defects in materials and workmanship from the date of purchase. This only applies if the alarms is used in the normal way and is serviced regularly. The obligations of this warranty shall be limited to the repair or replacement of any part of the alarm and is also conditional on the LP Gas Alarm's not having been tampered with, modified or subject to attempted repairs. Your statutory rights as a customer are in no way compromised by this Guarantee. **Limitation on Liability:** The manufacturer will not be liable for the loss or damage of any kind, including incidental or consequential damages, resulting directly or indirectly from the failure of this product to activate in the event of accident.

Warning: LP Gas alarm is not a substitute for a smoke alarm. Five years life time under normal use. Recommend to replace after five years.